



AEP BREED PLANT FAIRBANKS, INDIANA

aep breed plant

AEP BREED PLANT

OWNER American Electric Power | LOCATION Fairbanks, IN | FACILITY TYPE Fossil-fired electric generating station

PROJECT BACKGROUND

Brandenburg was contracted by American Electric Power (AEP) to perform the total demolition and decommissioning of the former Breed Coal-Fired 450 Megawatt Generation Plant. The plant was closed in the early 1990's mainly as a result of the extreme change in depth of the adjacent Wabash River. This precluded the delivery of coal by barge because of the low water level and transportation by rail was too expensive.

SCOPE OF WORK

Removed all asbestos-containing material, fly ash, and residual silica material

Pumped out flooded basements

Removed salvageable equipment

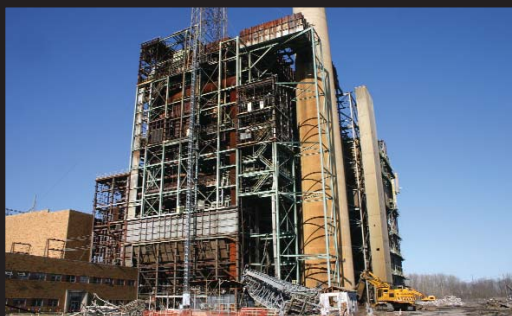
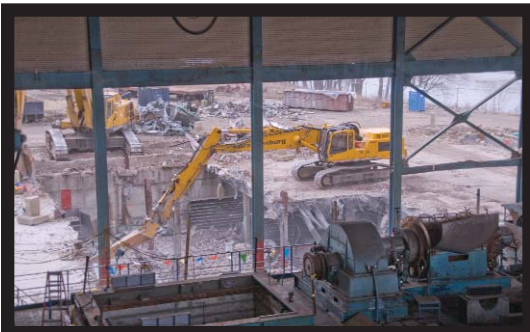
Minimized vibrations to protect the adjacent live switchyard

Demolished the 10-story steel frame structure, precipitators, and boilers

Blasted a 550-foot tall concrete stack

Constructed bulkheads for the water inlets from the adjacent river

Backfilled 60-foot deep basements and graded the entire area



Brandenburg[®]