



**FORD BODY SHOP** CHICAGO, ILLINOIS

# ford motor company

## FORD BODY SHOP

OWNER Ford Motor Company | LOCATION Chicago, IL | FACILITY TYPE Automobile manufacturing facility

### PROJECT BACKGROUND

The Taurus assembly line was comprised of heavy steel machinery plus overhead and underground conveyors. A majority of the job involved working around specialized robots and other equipment that was to be saved. Brandenburg used 130 skilled employees around the clock to complete the job in this nearly 1,000,000 square foot building ahead of schedule.

According to Ford's project manager, Paul Stapleton, *"Brandenburg has a proven track record of completing these fast-paced projects safely and ahead of schedule. Brandenburg was one of the driving forces that allowed us to launch our new products on time."*

### SCOPE OF WORK

Perform utility isolations and disconnections

Remove tooling and conveyor equipment from two separate manufacturing areas

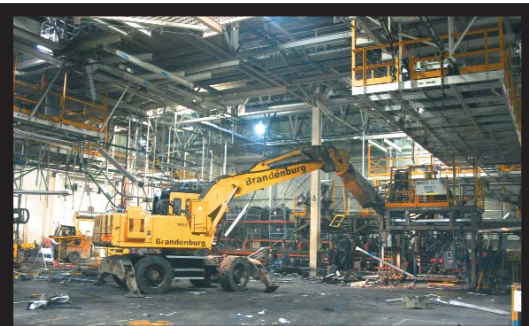
Remove header steel and piping

Preserve machinery and robots designated to be saved

Pump out oil and grease from pits, trenches, and machinery

Fill open pits and trenches and pour new concrete floors

Complete project in 96 hours



**Brandenburg**<sup>®</sup>  
Industrial Service Company